

Pindar Pythian 8

Rhythmic Template 12/19/04

Single Staff

phi lo/ phron he su khi/ a Di/ kas

2
o^ me gis to/ po li thu/ ga ter

3
bou la/n te kai\ po le/ mon

4
e/ khois a kla i^ das hu per ta/ tas

5
pu thi o/ ni kan ti ma\n A ris to me/ nei de/ keu

6
tu\ gar to\ mal tha ko\n e/rk sai te kai\ pa thei^n o mo^s

7
e pi/s ta sai kai ro^ su\n a tre kei^

8
tu\ d'o po/ tan tis a mei/ li khan

9
kar di/ a ko/ ton e ne la/ sei

10
tra khei^ a dus men e/ on



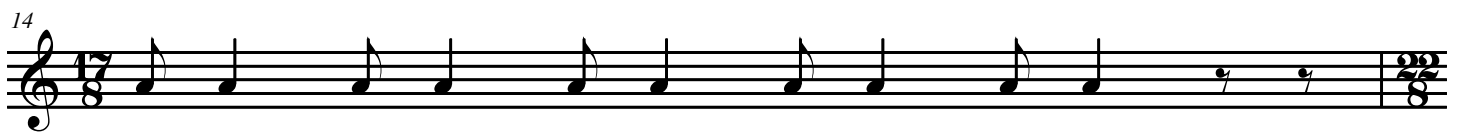
hu pan i a/k sai sa kra/ tei — ti thei^s



hu/ brin en a/n tlo ta'n ou de\ por phu ri/ on ma/ then



par ai^ san ex e re thi/z don ke/r dos de\ phi/l ta ton



he ko/n tos ei/ tis ek do/ mon phe/ roi



bi/ a de\ kai\ me ga/ lau khon e/s pha len en khro/ no



Tu pho\s ki/ lix he ka to/ng kra nos ou/ nin a/ luk sen



ou de\ ma'n ba si leu\s gi ga/n ton dma^ then de\ ke rau no^




to/k soi si/ t'A po/l lo nos ho\s eu me nei^ no/ o




Xe na/r kei on e/ dek to Ki/r ra then es ste pha no me/ non




hui o'n poi/ a Par nas si/ di Do ri ei^ te ko/ mo


21

 e/ pe se d'ou kha ri/ ton he ka/s


22

 Ha di kai o/ po lis A re tai^s


23


 Klei nai^ sin Ai ai ki da^n


24

 thi goi^ sa na^ sos te le/ an d'e/ khei

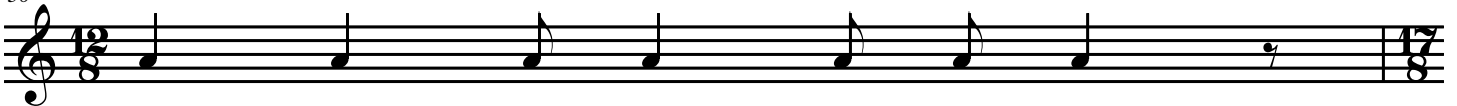
25

 do/k san ap ar kha^s Pol loi^ si me\n ga\r a ei/ de tai

26

 ni ka pho/ rois en a e/th lois thre/p sai sa kai\ tho ai^s

27

 hu per ta/ tous he/ ro as en ma/ khais

28

 ta\ de\ kai\ an dra/ sin em pre/ pei

29

 ei mi\ d'a/s kho los a na the/ men

30

 pa^ san ma kra go ri/ an

4
31

Pythian 8 12/19/04



ly/ ra te kai\ phthe/g ma ti mal tha ko^



me\ ko/ ros el tho\n kni/ se to\ d'en po si/ moi tra/ khon



i/ to te o\n kre/ os o^ pai^ ne o/ ta ton ka lo^n



e ma^ po ta no\n am phi\ ma kha na^



pa lais ma/ tes si gar ikh neu/ on ma tra del phe ou/s



Ou lum pi/ a te The o/g ne ton ou kat e le/g kheis



ou de\ Klei to ma/ khoi o ni/ kan Is thmoi^ thra su/ gui on



au/k son de pa/ tran Mei du li da^n lo/ gon — phe/ reis



to\n ho/n per pot O ik le/ os pai^s en hep ta pu/ lois i do/n



hui ou\s The/ bais ai ni/k sa to par me/ non tas ai khma^

61

tu\ d'e ka ta bo/ le pa/n do kan

62

na o\n eu kle/ a di a ne/ mon

63

Pu tho^ nos en gu a/ lois

64

to\ me\n me/ gis ton to/ thi khar ma/ ton

65

o/ pa sas oi/ koi de\ pro/s then har pa le/ on do/ sin

66

pen taeth li/ ou su\n he or tai^s hu mai^s ep a/ ga ges

67

o^ nax he ko/n ti d'eu/ kho mai no/ o

68

ka ta/ tin har mo ni/ an ble/ pein

69

amph he/ kas ton ho/ sa ne/ o mai

70

ko/ mo me\n ha du me lei^

8
71

Pythian 8 12/19/04



Di/ ka pa re/s ta ke the o^n d'o/ pin

72



a/ph tho non ai teo^ Xe/ nar kes hu me te/ rais tu/ khais

73



ei ga/r tis es la\ pe/ pa tai me\ su^n ma kro^ po/ no

74



pol loi^s so pho\s do kei^ ped aph ro/ non

75



bi/ on ko rus se/ men or tho bou/ loi si ma kha nai^s

76



ta\ d'ouk ep an dra/ si kei^ tai dai/ mon de par i/s khei

77



a/l lot a/l lon hu/ per the ba/l lon a/l lon d'ou po\ khei ro^n

78



me/t ro ka ta/ bain en Me ga/ rois d'e/ kheis ge/ ras

79



mu kho^ t'en Ma ra tho^ nos He/ ras t'a go/n e pi kho/ ri on

80



ni/ kais tris sai^s o ris to/ me neis da/ mas sas e/r go

10
91

Pythian 8 12/19/04



hup op te/ rois a no re/ ais e/ khon



kre/s so na plou/ tou me/ rim non en d'o li/ go bro to^n



to\ terp no^n au/k se tai hou/ to de\ kai\ pi/ tnei kha mai/



a po tro/ po gno/ ma se seis me/ non



e pa/ me roi ti/ de/ tis ti/ d'ou/ tis ski a^s o/ nar



a/n thro pos all ho/ tan ai/g la di o/s do tos e/l the



lam pro^n phe/g gos e/p es tin an dro^ n kai\ mei/ li khos ai o/n



Ai/ gi na phi/ la ma^ ter e leu the/ ro sto/ lo



po/ lin ta/n de ko/ miz de Di\ kai\ kre/ on ti su^n Ai a ko^



Pe lei^ te k'a ga tho^ Te la mo^ ni su/n t'A khil lei^